



Using Data to Inform Instruction

Syosset Central SD
PTA Council Meeting
October 2018

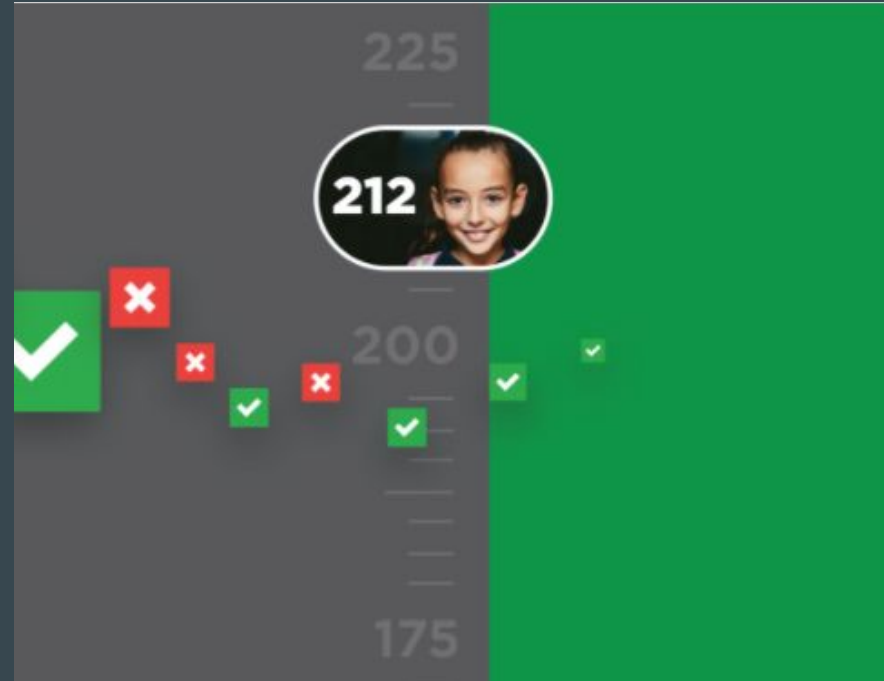
What is
“universal screening”
and why is it
important?



Why did we choose NWEA MAP

(Measures of Academic Progress)

Growth Test?



How did we begin the implementation?

(Pilot @ Baylis & SG)

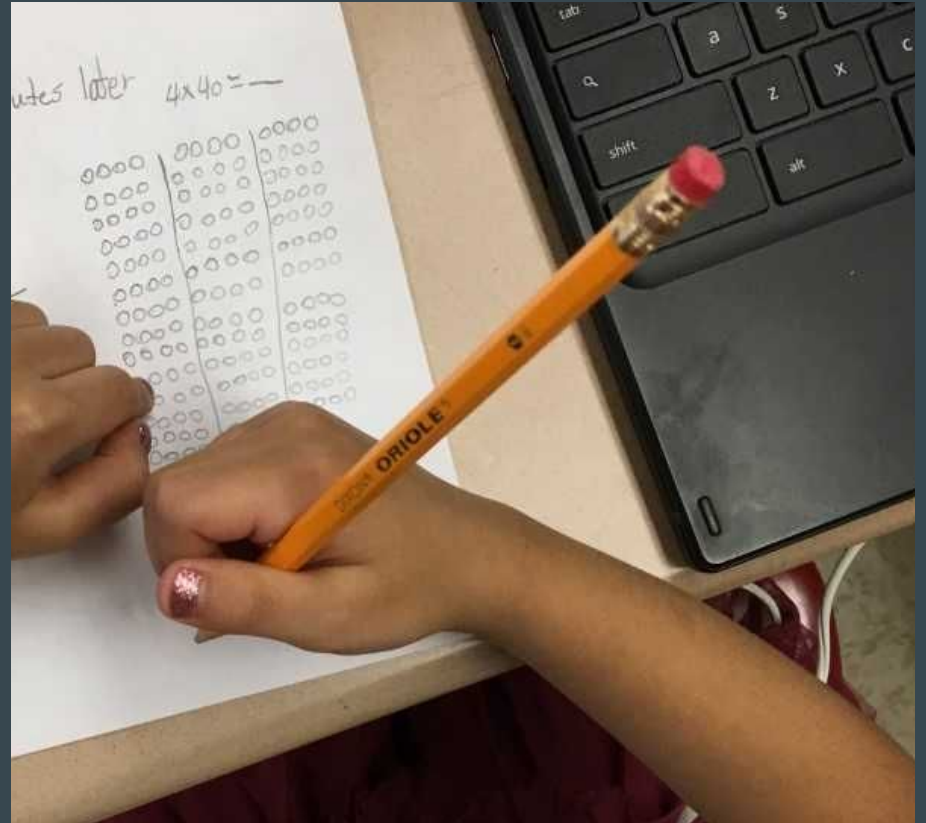


Who, What, When, Where, How?

- What areas?
- When & how often?
- What grades?
- How's it scored?



How will the school use the information from this assessment?



Which test are you going to take?



MAP Growth™ K-2



MAP Growth™

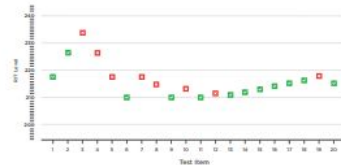
Where can
parents go
to get more
information?
<https://www.nwea.org/parent-toolkit/>

Parent's Guide to MAP Growth

Children learn better—and faster—when teachers have a clear picture of what each student knows and is ready to learn next. That's why a group of educators and researchers founded NWEA, a not-for-profit organization that has created some of the most trusted and reliable assessment solutions available. More than 9 million students in the US and in 30 countries worldwide use MAP Growth™.

How it Works

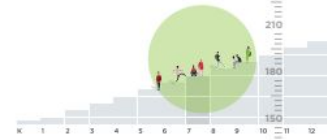
MAP Growth is a computer-adaptive test. If your child answers a question correctly, the next question is more challenging. If they answer incorrectly, the next one is easier. This type of assessment challenges top performers without overwhelming students whose skills are below grade level.



MAP Growth begins with a question at each of grade level and adjusts level of difficulty if student performs well.

What it Measures

MAP Growth uses a RT scale to accurately measure what students know, regardless of their grade level. It also measures growth over time, allowing you to track your child's progress throughout the school year and across multiple years. Once your child completes a MAP Growth test, they receive a RT score.



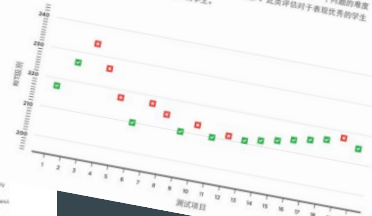
The RT scale precisely measures student performance, regardless of whether they're performing at, above, or below grade level.

家长指南 MAP Growth

当教师对每位学生当前的知识情况及下一步的学习计划有清晰的认知时，孩子学得更好、更快。这也是为什么一些教育工作者及研究人员创立 NWEA 的原因。作为一个非盈利的组织，NWEA 构建了一些值得信赖且易于使用的评估方案。目前，来自全球 45 个国家（包括美国）的九亿多方的学生正在使用 MAP Growth™。

运作方式

MAP Growth 是一个计算机自适应测试。如果您的孩子正确回答了一个问题，那么下一个问题的难度将会增加。反之，如果回答错误，那么下一个问题的难度将会减少。此类评估对于表现优秀的学生极具挑战性，但并不会打击能力在年级水平下的学生。



MAP Growth 使用 RT 量表——一种衡量学生知识水平的可靠方法，无论学生的个人表现情况是高于或低于年级水平。