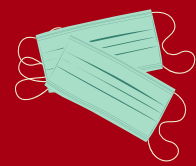


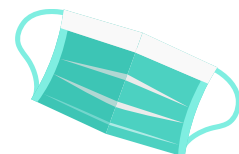
SCSD MASK PROTOCOLS



What are the requirements for masks?

Masks are required **at all times**.

- All students, teachers, staff members and visitors to the buildings are required to wear masks.
- Masks may only be removed when engaged in physical activity, eating meals, and during instruction when a brief mask break is permitted with appropriate social distancing and physical barriers in place.
- Masks must be worn over the nose, mouth and chin.
- Masks should be paper surgical masks or cloth masks with a filter layer. Gaiters, bandanas and masks with vents are not permitted.
- Face shields cannot replace face masks.



Mask Breaks:

Masks may be challenging for students to wear in all-day settings, so the following procedures are in place.

- During instruction, brief "mask breaks" will take place for students and teachers when they can safely maintain 6' social distance and are separated by desktop barriers.
- Mask breaks will be brief in duration (no more than a total of 8 minutes).
 - The NYS DOH defines a 10-minute exposure to an infected individual as a "close contact", so mask breaks will be of lesser duration.
- Teachers will only permit half the class to remove masks simultaneously during instruction
 - Classroom desks will be designated as "red desk/white desk," in a checkerboard pattern, for mask break times. As such, a student without a mask is always 12' away from another unmasked student during the mask break.
- Students may remove their mask while eating lunch.
 - Desktop barriers will be in place to provide an additional protective measure when students remove their mask to eat.

Masks on Buses:

- Students and drivers will be required to wear masks on the bus.
- A supply of masks will be available should a student arrive at the bus without a mask.

Helpful Resources:

Instructional video on how to wear and take off a mask:

<https://www.youtube.com/watch?v=etZK-GrUYgM>

[Pediatricians Answer Top 10 Questions Regarding Masks in Children \(AAP\)](#)

[District Code of Character, Conduct and Support \(Policy 5300\)](#) - see page 13 for mask policy

